

Headline sponsors:



NATIONAL CARGO BIKE SUMMIT

Supported by:



Lambeth



Royal Mail



Headline sponsors:



NATIONAL CARGO BIKE SUMMIT

Supported by:



Lambeth



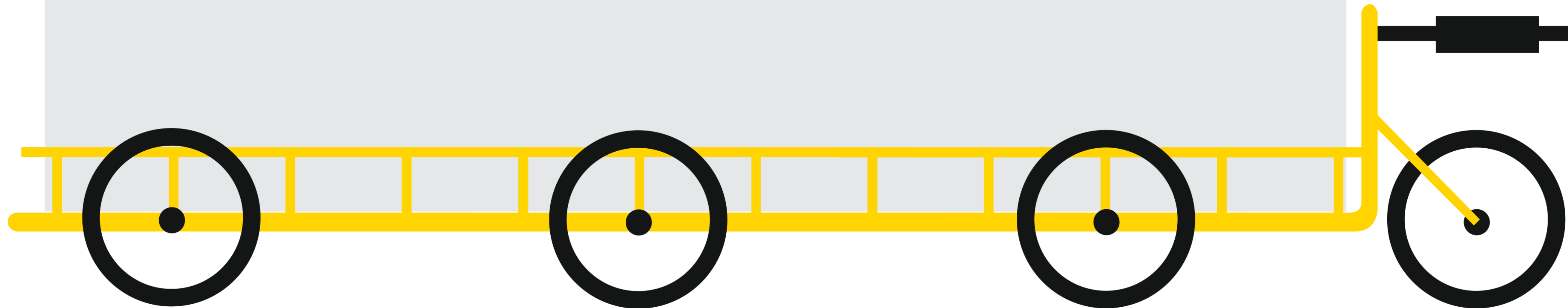
Royal Mail



Ali Howes

Senior Transport Planner

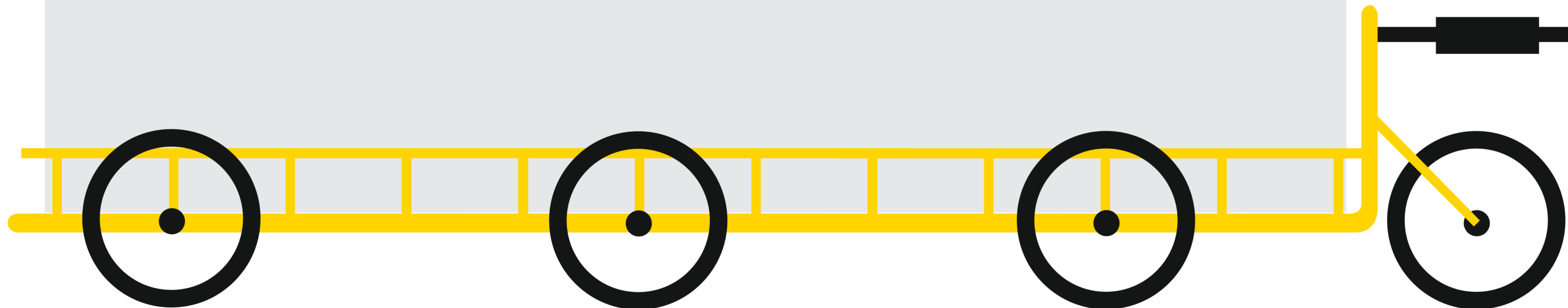
Zero Emissions Network (ZEN)



Alice Carter

Active Travel Officer

Transport for Greater Manchester



Kick-starting a cargo bike revolution in Greater Manchester

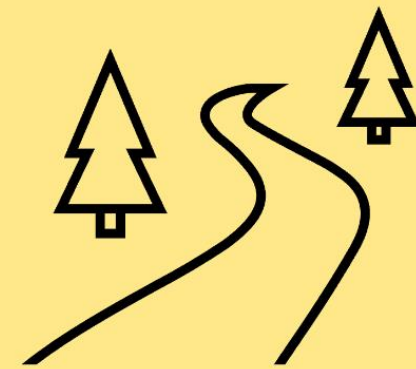
Alice Carter

Active Travel Officer, Transport for Greater Manchester

alice.carter@tfgm.com



BEE NETWORK



1,800 miles
of safe routes



2,400
crossings



Cycle Hire

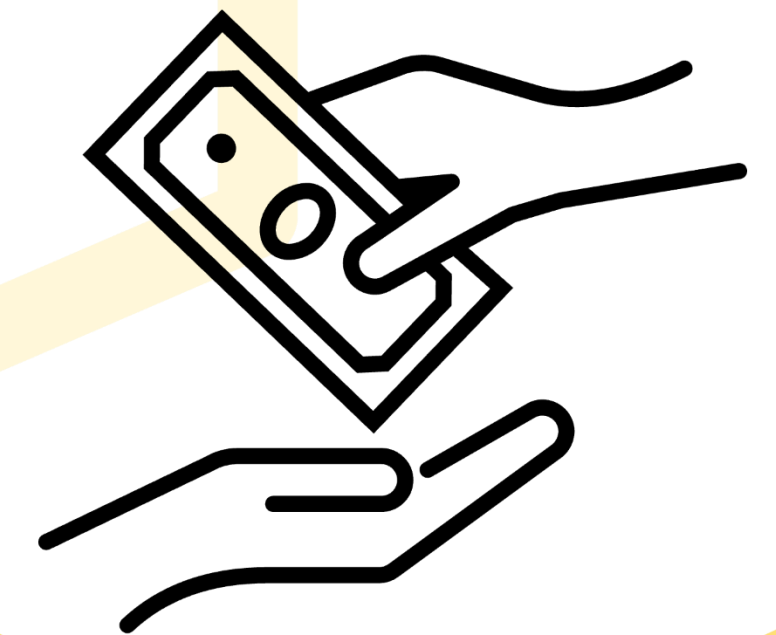
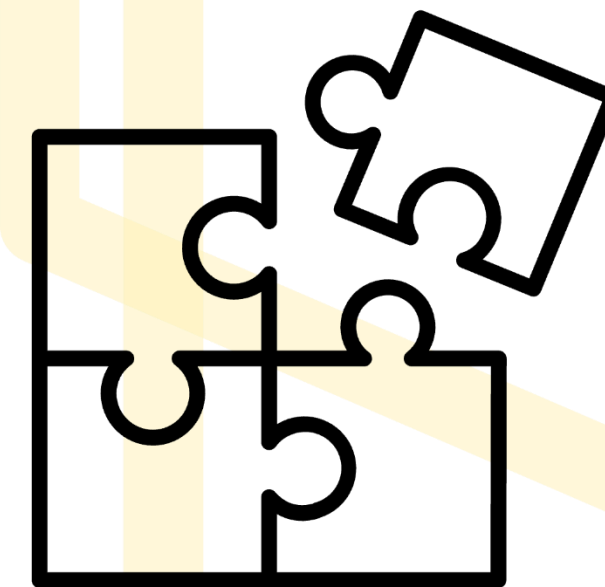
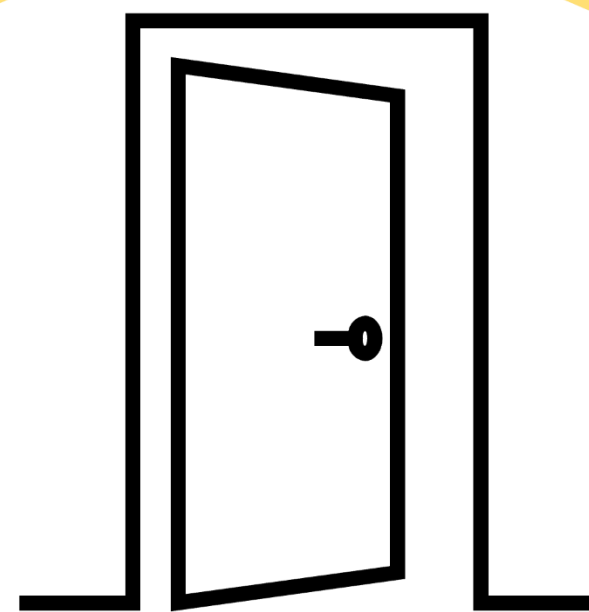
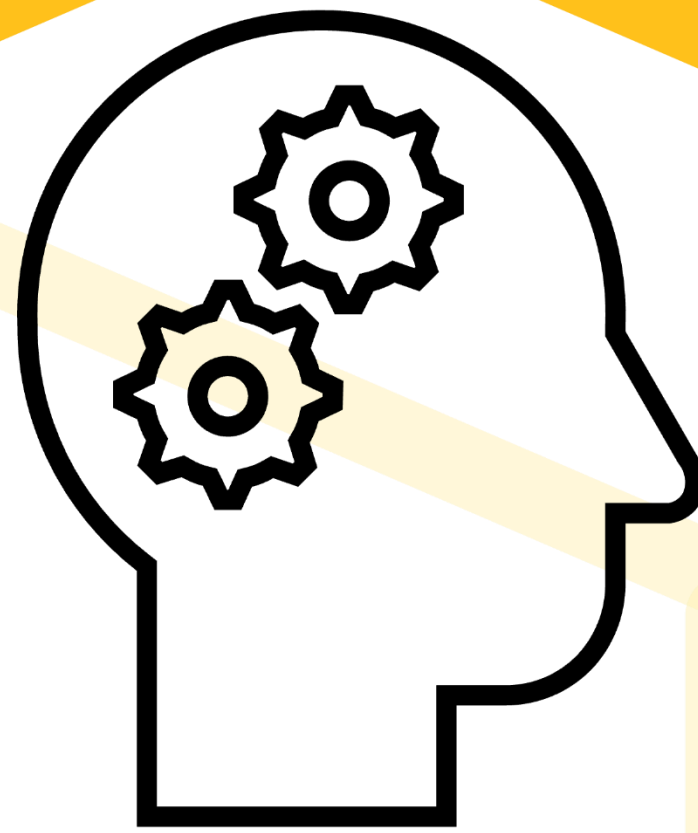
Streets for All



[Streets for All Strategy](#)



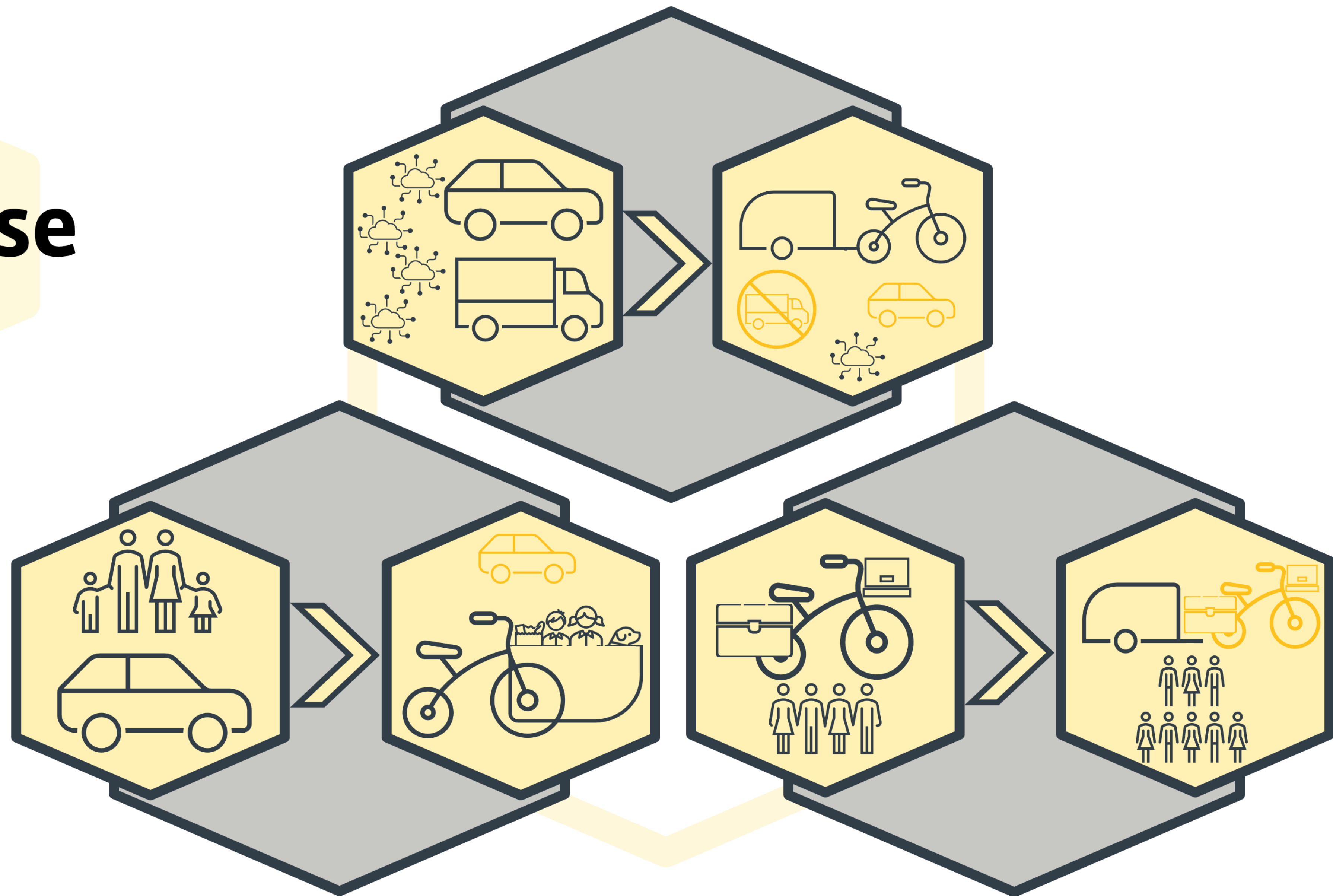
Enabling Behaviour Change

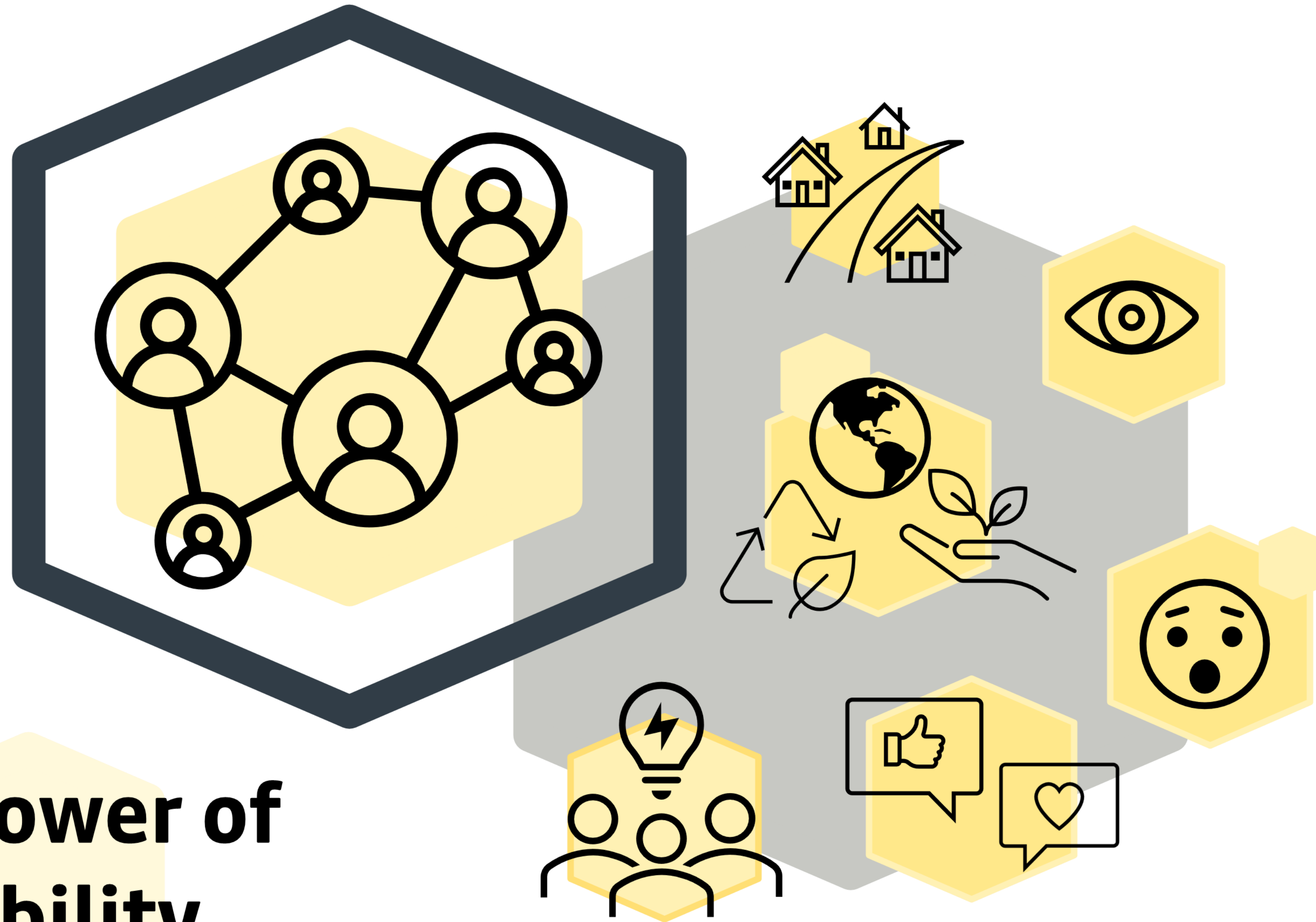


Inspiring Action!



Purpose

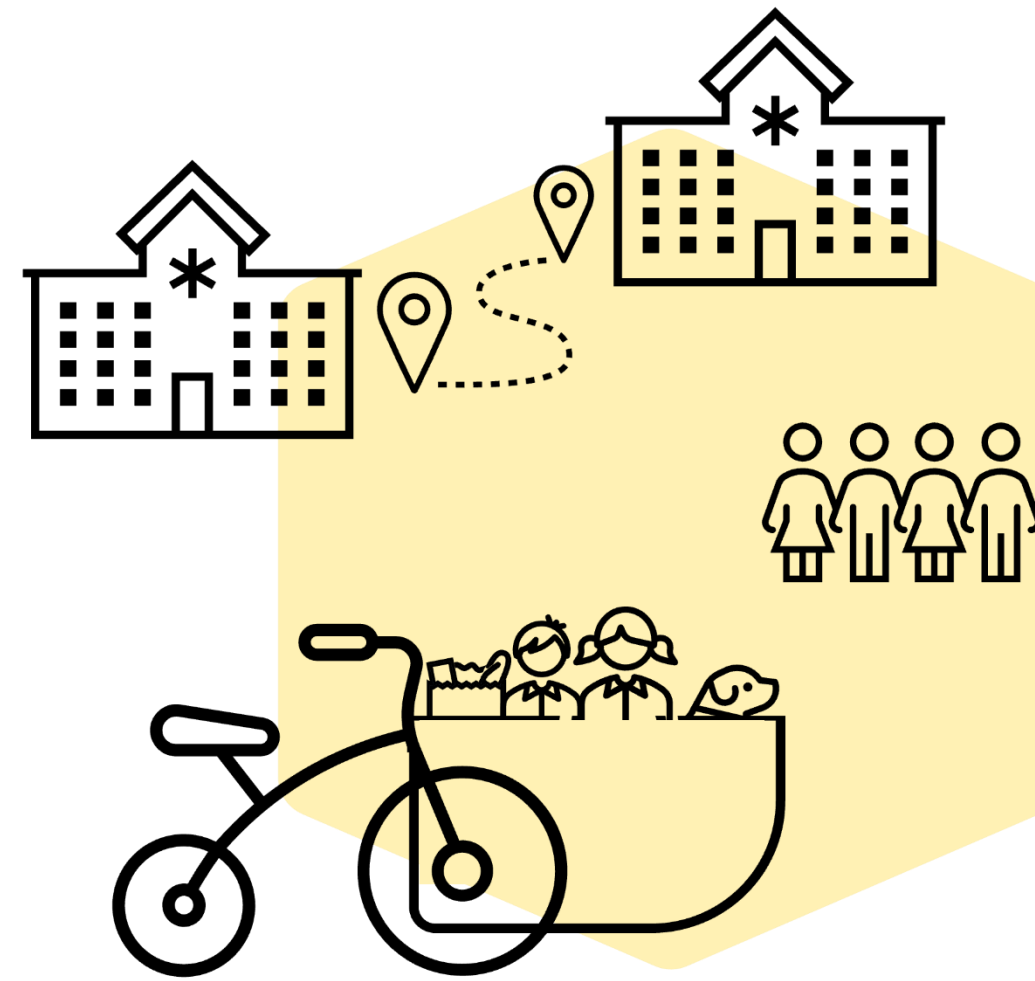




The Power of Visibility



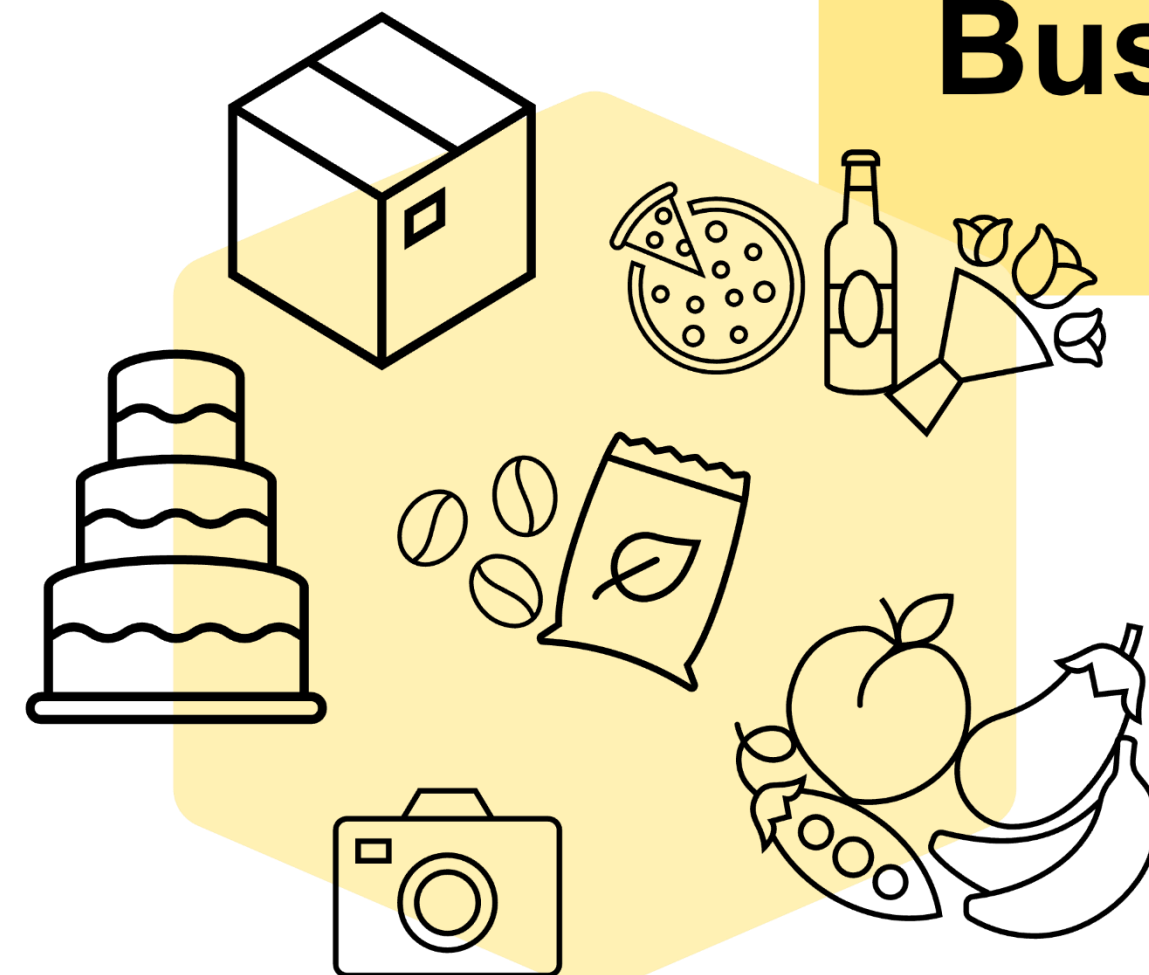
Key Audiences



**Education
Providers**



**Small
Businesses**



**NHS Healthcare
Providers**

**VCSE
organisations**





**Electric &
non-electric
cargo bikes**

**Up to 100%
contribution to a
maximum of
£10,000**

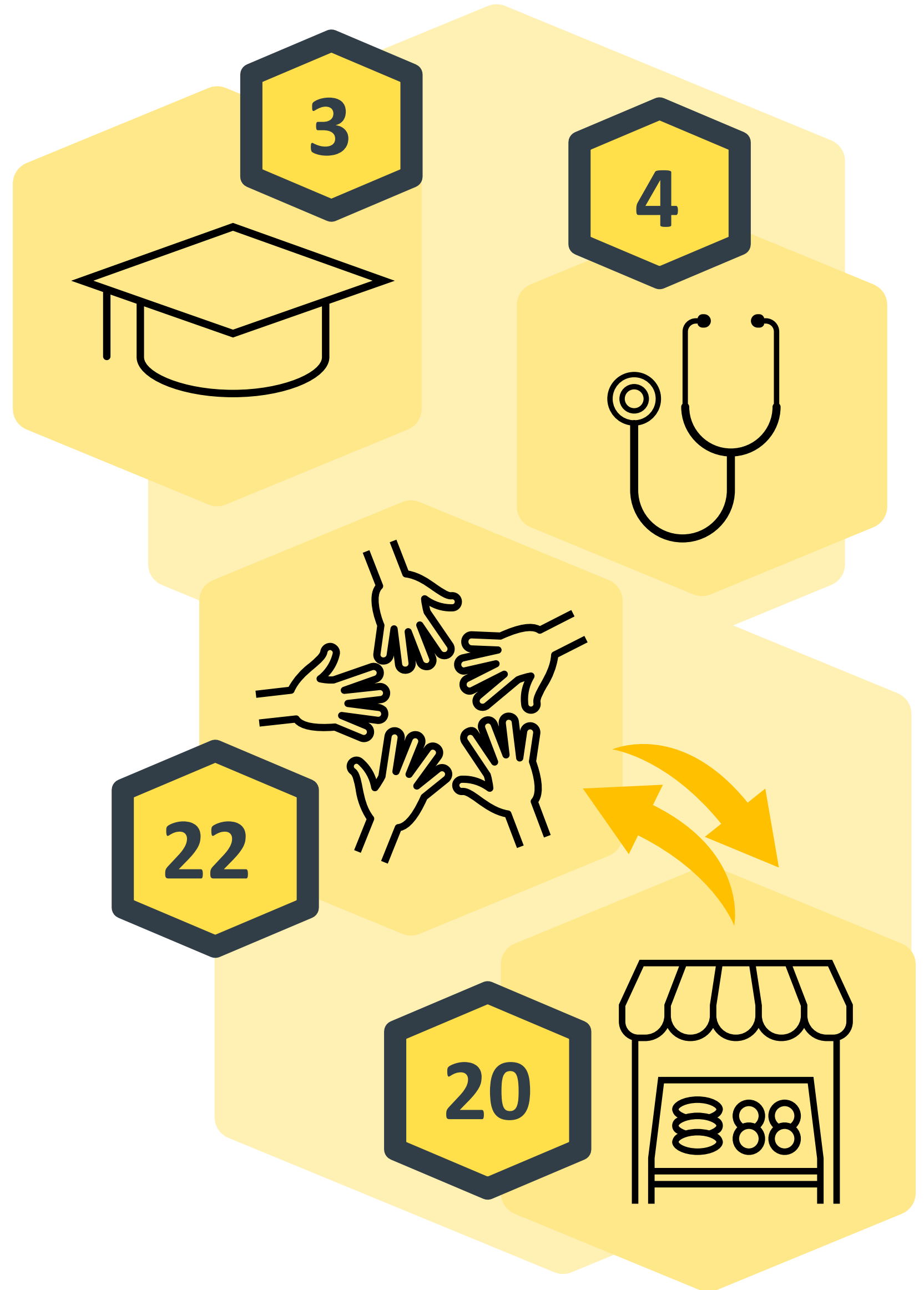
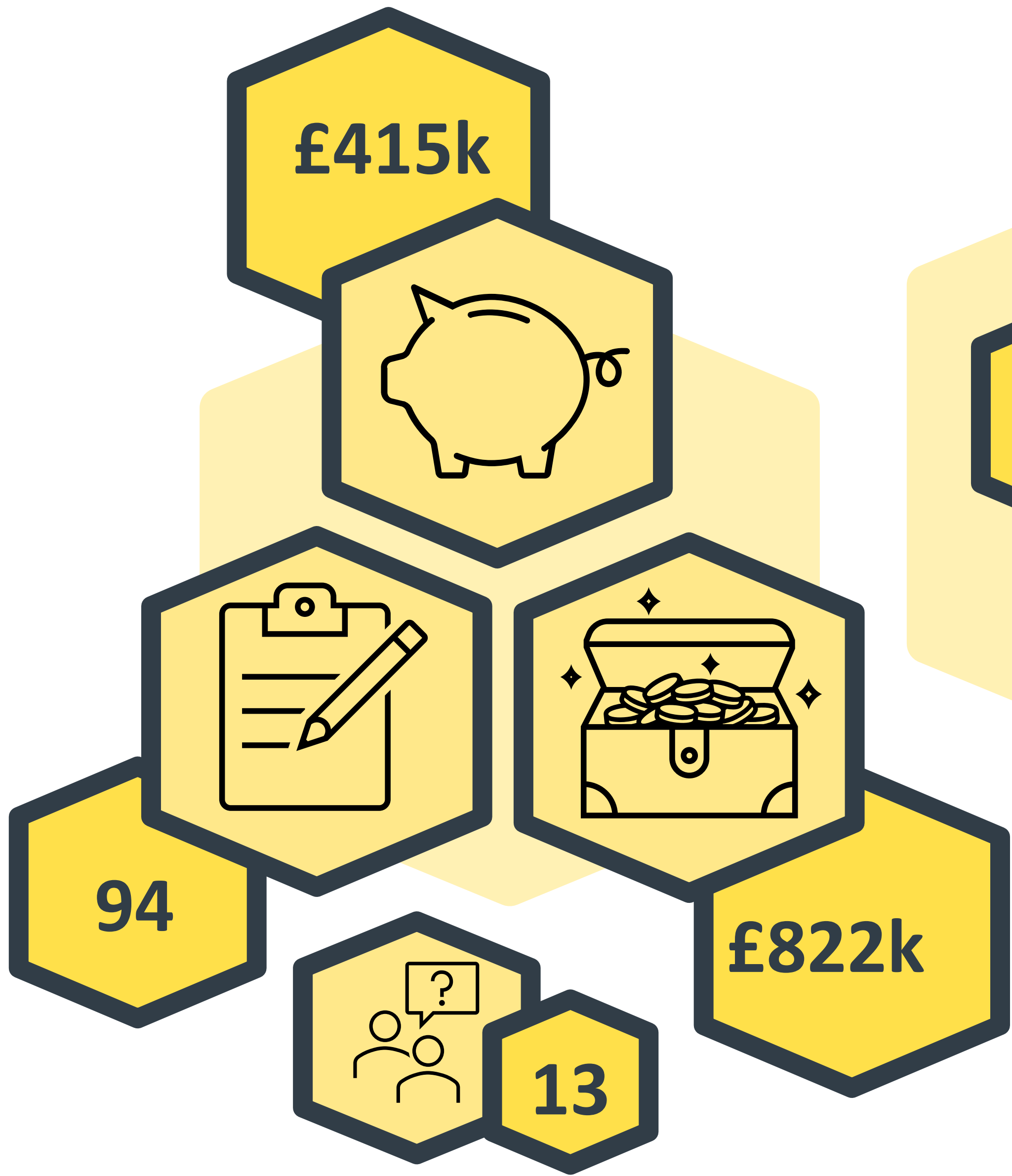
Trailers

**Crates &
carrying
solutions**

**Storage
&
Security**

**Purchase
Options &
Accessories**



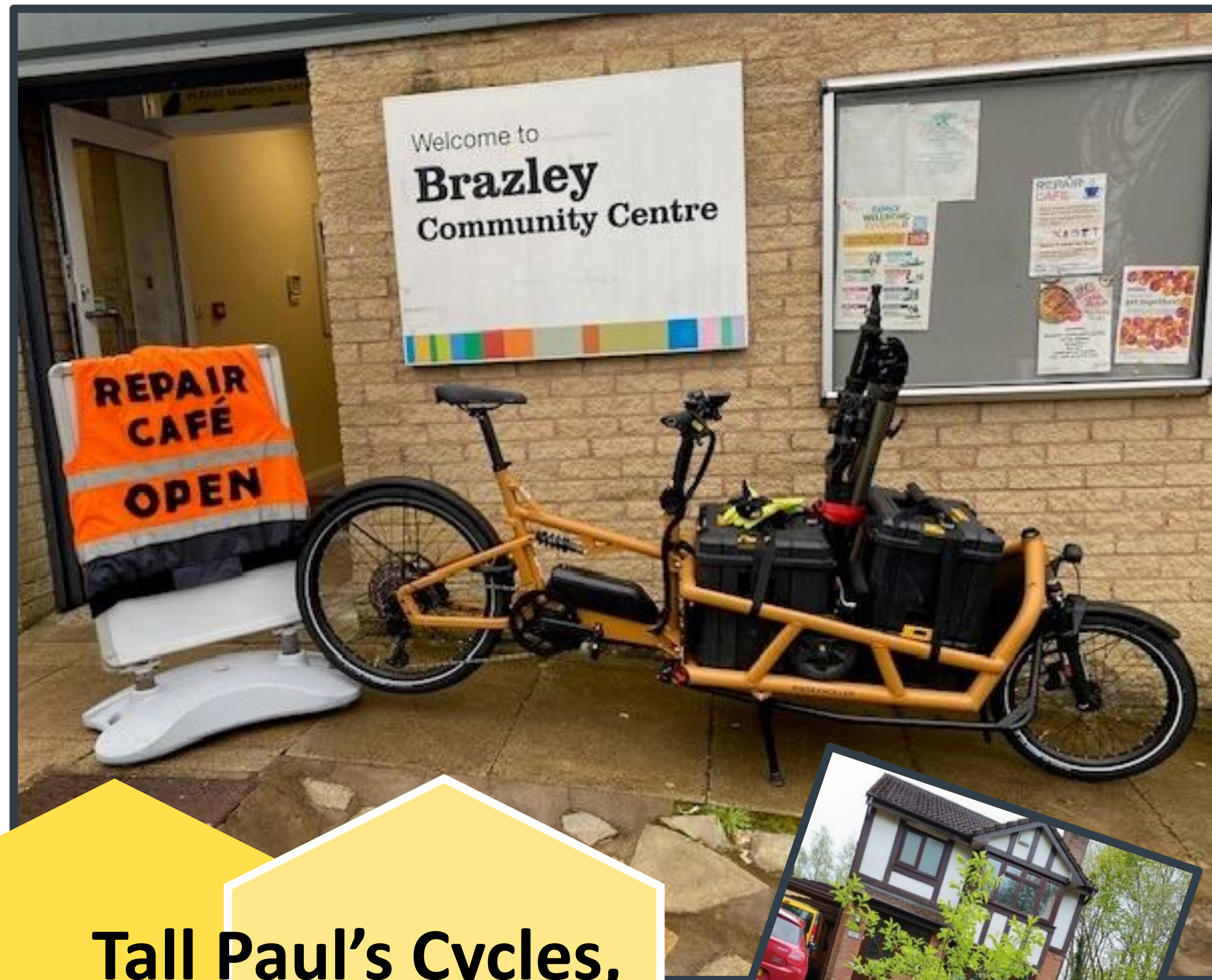


Cargo 6, Trafford



Painless Landscaping, Tameside





**Tall Paul's Cycles,
Bolton**



**Chainlink Community
Cycles,
Trafford**

The Bird Box MCR, Manchester



From the Other, Salford

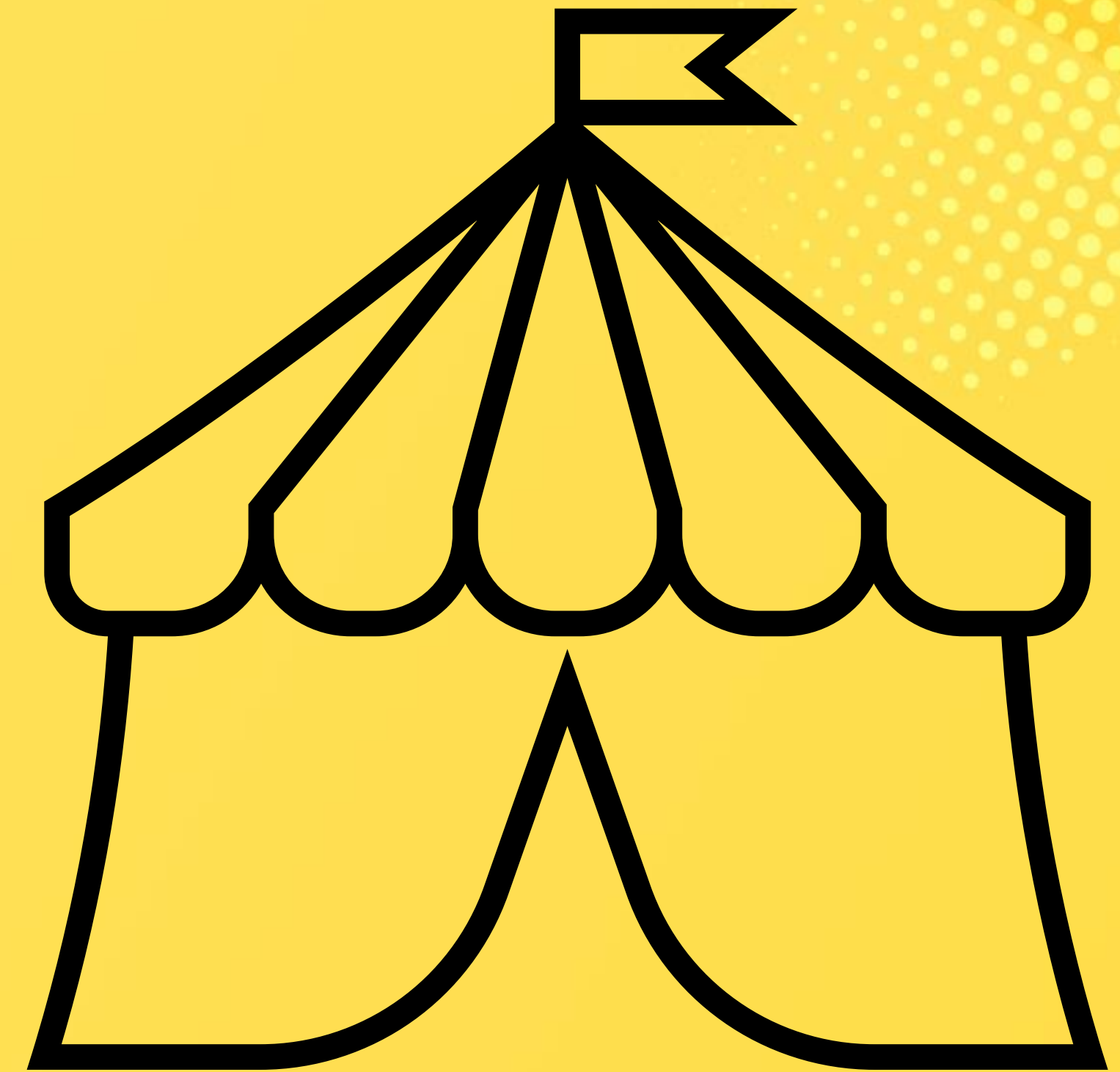


**Fallowfield &
Withington
Foodbank,
Manchester**

What's next?

“There is clear appetite within Greater Manchester to embrace sustainable alternatives to traditional logistics methods.

There is significant opportunity to capitalise on this desire to support our strategic aims.”



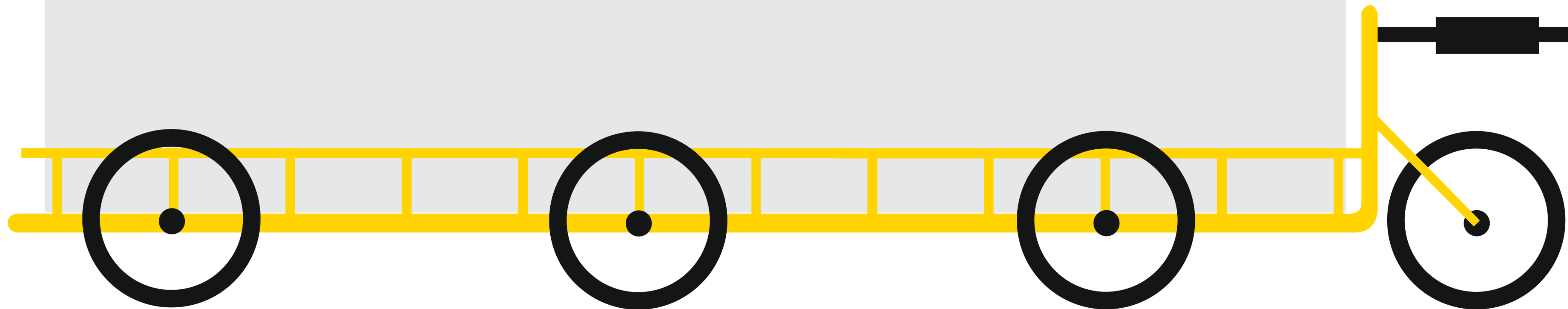


NATIONAL
CARGO BIKE
SUMMIT

Richard Andrews

Active Travel Project Officer

Norfolk County Council



A cargo bike library operating in the Norwich Air Quality Management Zone

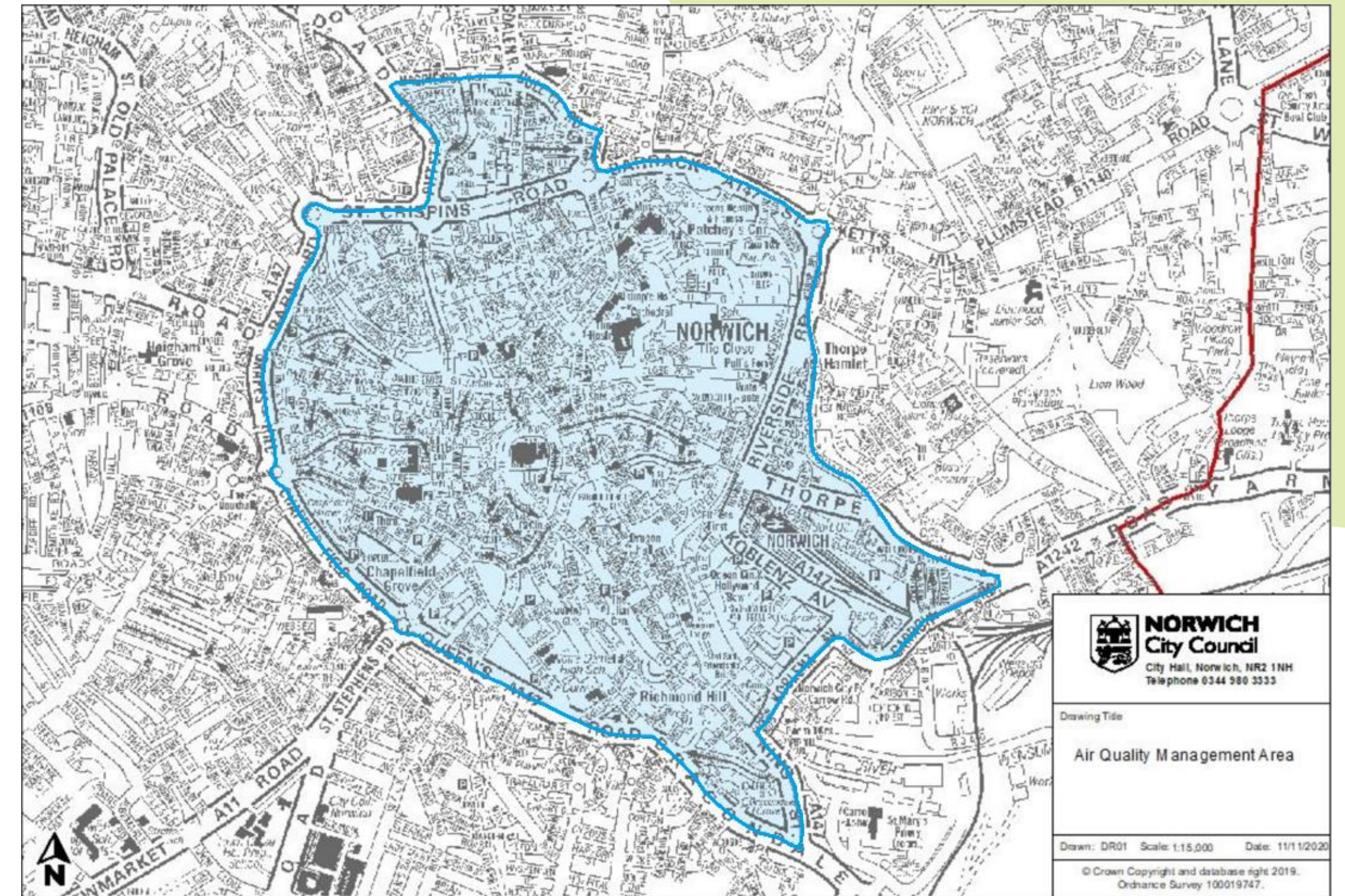


About Norwich



The Challenge

- Norwich has an Air Quality Management Zone, to manage NO₂ Levels. Switching freight from car / van-based transport to e-cargo is likely to have a positive impact on air quality. This project will help us gather improved data about this.
- A feasibility study in Norwich has concluded that there are around 2,480 local units (individual sites or shops) in Norwich that could benefit from e-cargo bikes.



Our solution

- An e-cargo bike library, free to access for businesses operating in the Air Quality Management Area.
- Norfolk County Council £171k secured from DEFRA.



Next steps

- Research and preparation
- Appointment of operator

Outspoken!
Cycles



The Launch – November 2023

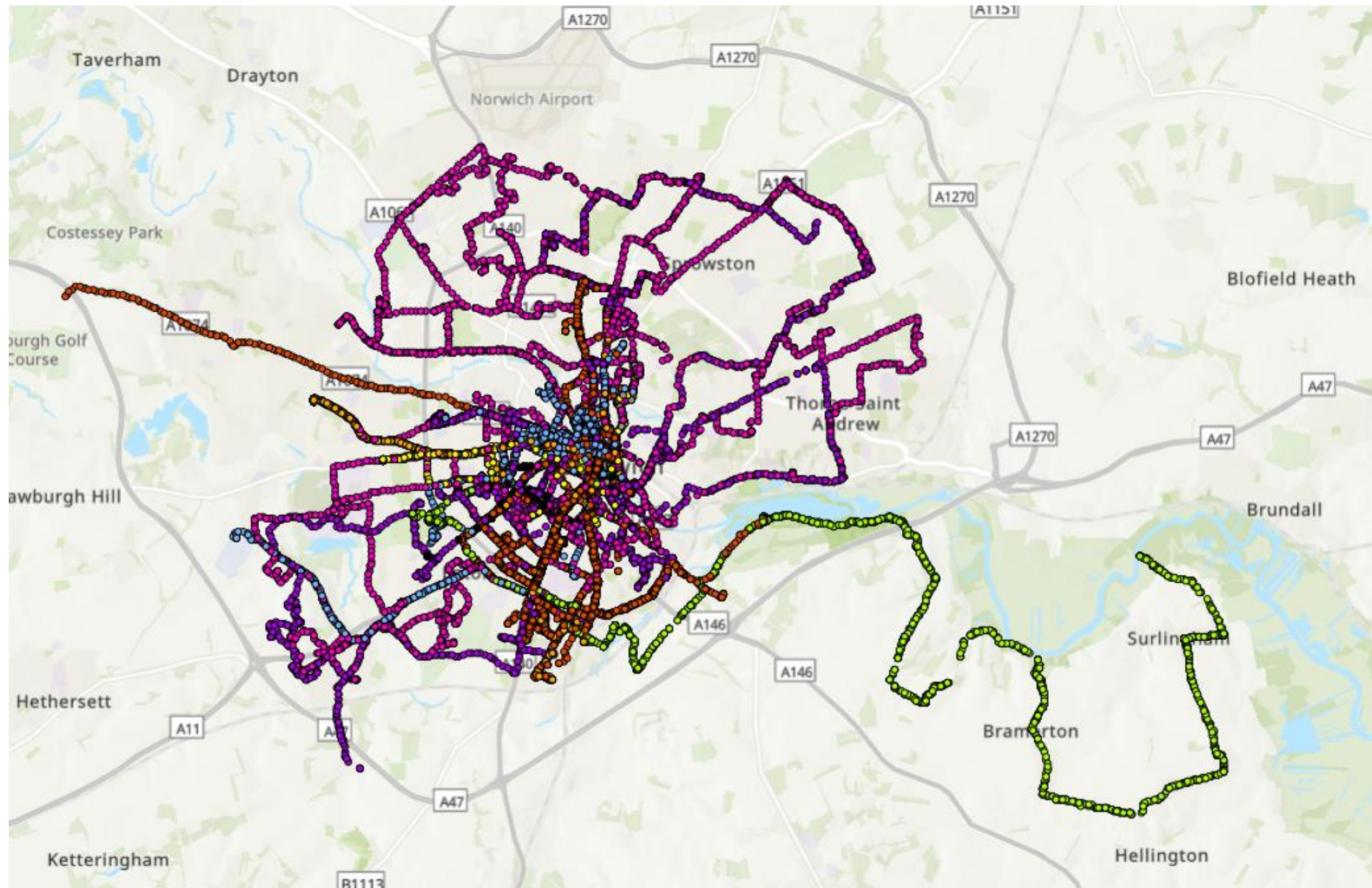
- Invited local councillors
- Invited local press
- Large area for trying bikes
- Collective experience of hosting similar events made this easy.



The Bikes



Usage of the fleet



- 625km cycled at the end of March
- 132 days used at the end of March



What worked well

- Spending time on the tender specification,
- Ensuring that our bike specifications accommodated a range of heights, sizes, and genders,
- Dealing with incidents effectively,
- Working well with the operator.

Outspoken!
Cycles



Challenges & Lessons

- Allow enough time for the procurement process in planning stage,
- Allow enough time between the contract being awarded and your planned launch date,
- Branding,
- Launch time off season



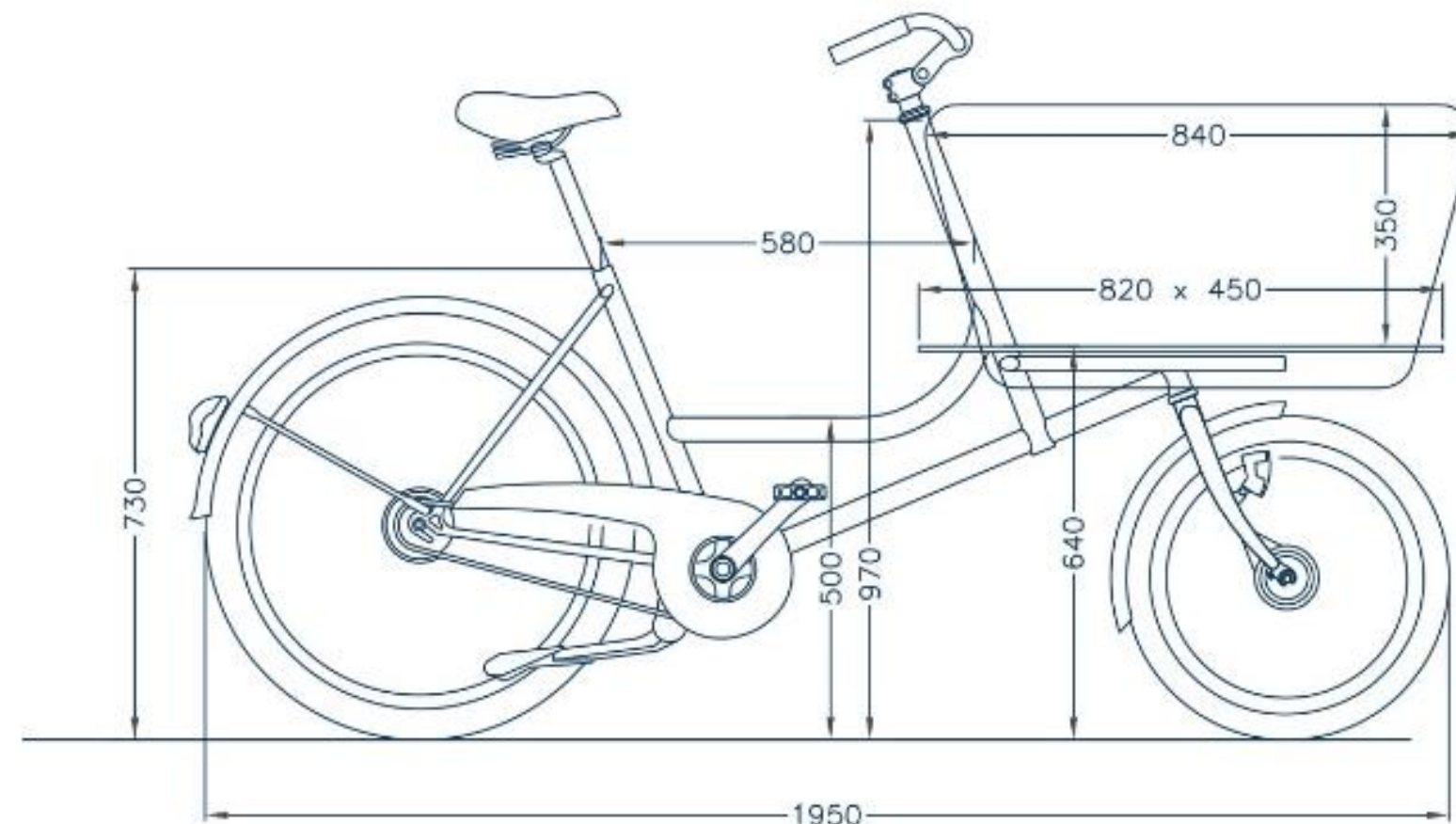
Case Study

Saul Press - Beer Hatch

Jumping on and off the cargo bike was quicker than getting in and out of a car

significant benefits beyond our initial expectations

the cargo bike provided a seamless door-to-door experience

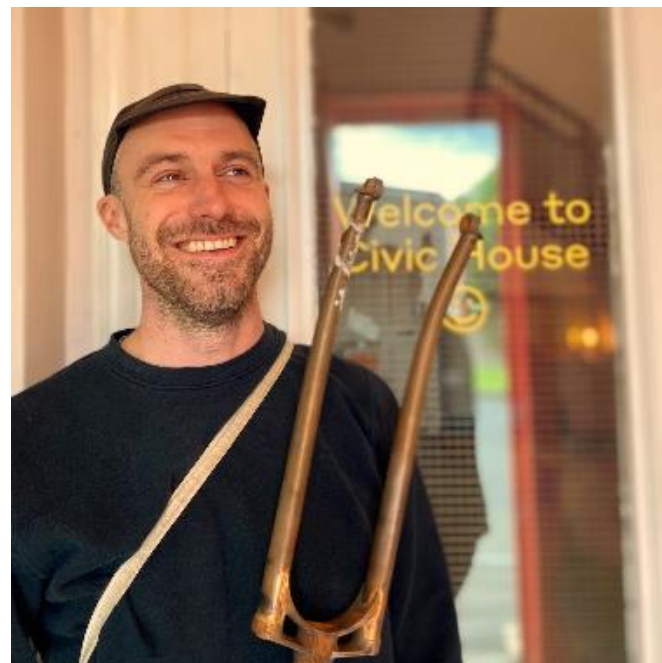


What next?

- Feedback from users,
- Project legacy.



Thankyou for listening



Richard Andrews
Norfolk County Council
richard.andrews@norfolk.gov.uk

Tash Hartke

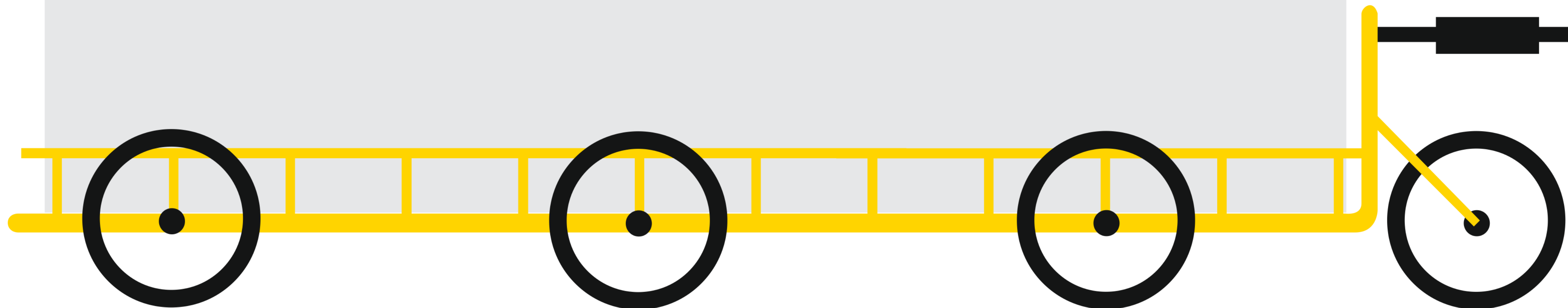
Kerbside Strategy Programme Manager

London Borough of Lambeth

Elliott Quinn

Climate Response Strategy Manager

London Borough of Lambeth



LAMBETH'S

CLIMATE° ACTION PLAN

**Tackling the climate and
ecological emergency together**

Transport objectives for Net zero 2030

Reduce traffic

Plan and develop local areas to ensure residents and businesses' essential needs can be met locally. Improve public and safe active travel provision and shared vehicle access to reduce car dependency and decrease motor traffic by 27% in the borough.

Shift modes

At least 85% of journeys in Lambeth are made by walking, cycling or other public transport modes by 2030.

Climate friendly streets

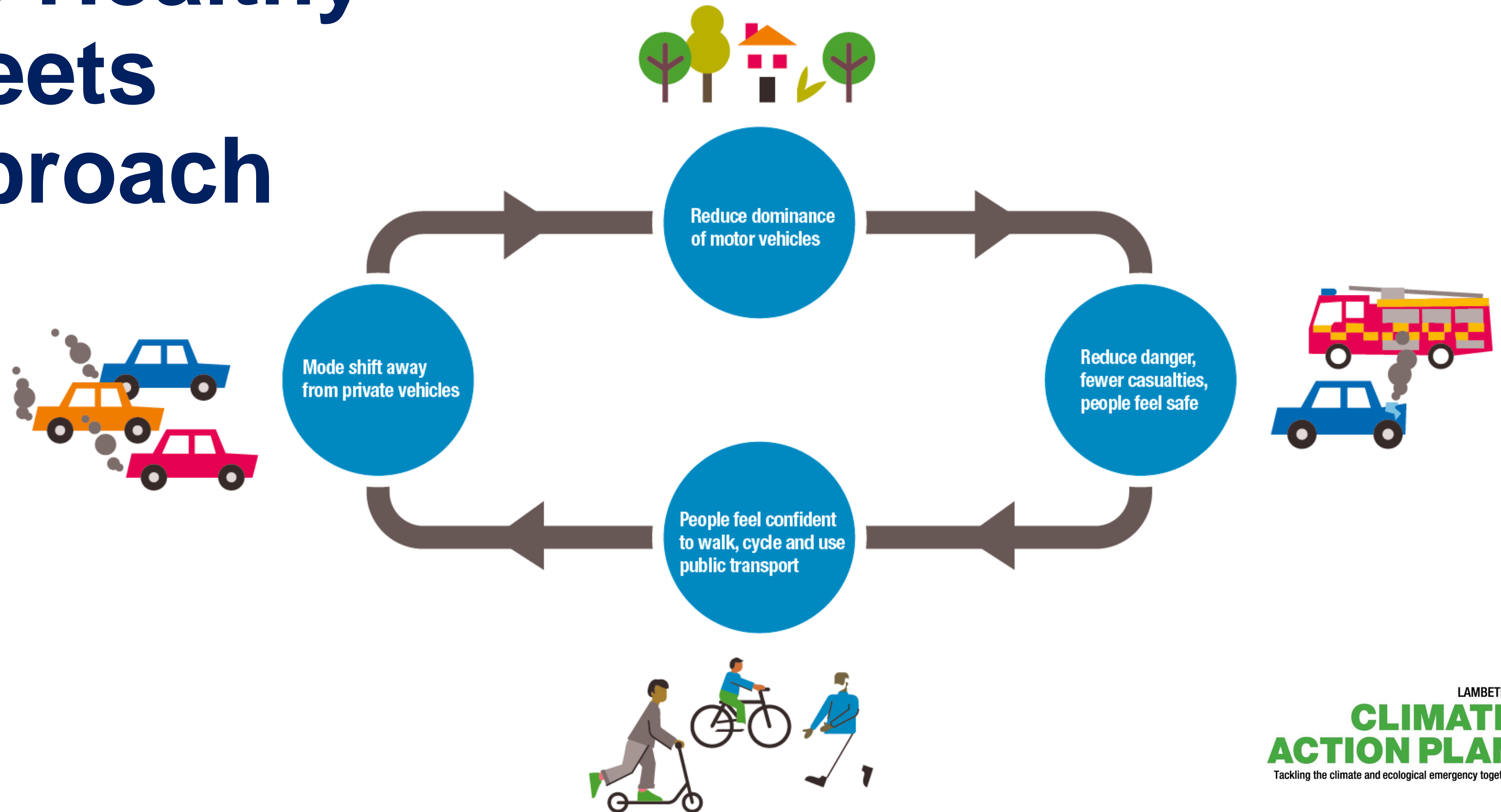
Enable 25% of kerbside space on Lambeth streets to be allocated to uses that enhance community and business resilience to climate change e.g. tree planting, Suds, cycle parking, children's play, parklets, shared spaces.

Net zero freight

Achieve zero direct emissions from freight, delivery and trade by 2030 by working with our business community to develop and deliver freight consolidation solutions, de-carbonisation of vehicle fleets, and increased uptake of zero-carbon delivery solutions such as cargo bikes.



The Healthy Streets Approach



Main barriers for e-cargo bikes

Constrained space and Road danger?

02 Lambeth Road Danger Reduction Strategy

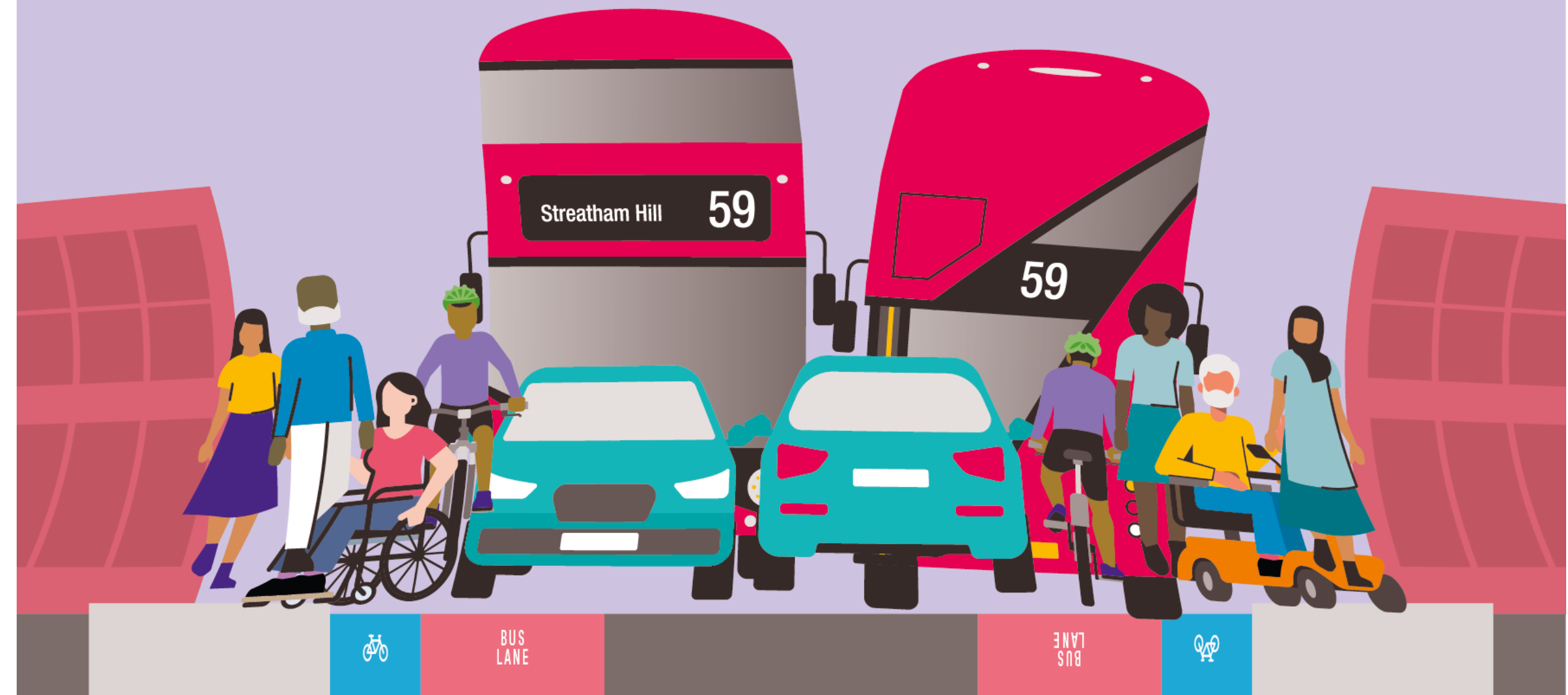
Healthy Streets 2030

Cycling on Clapham High Street or walking across Wandsworth Road does not feel as safe as it should. The pressure on limited street space often reaches breaking point with people walking, cycling or riding motorbikes no longer able to use them safely.

For this strategy to be successful, we need to find ways to make even the most challenging streets safe.

To do this, we need to have a long-term plan for how we prioritise limited space on our streets. Unfortunately, places like Herne Hill bridge or Wandsworth Road are not getting any wider, reducing road danger requires thinking about how our streets work across a wider area. The following pages outline 2 key principles that will inform Lambeth's vision for our first **Healthy Streets Network Plan**.

We cannot make this plan on our own, and it will be developed with extensive engagement with local people, Transport for London and neighbouring boroughs. Together, we will begin a journey that will ensure everyone, however they choose to travel, can do so safely.



LAMBETH'S
**CLIMATE
ACTION PLAN**
Tackling the climate and ecological emergency together

Main barriers for e-cargo bikes

Lack of
exposure and
understanding?



Where to store them?



LAMBETH'S
CLIMATE ACTION PLAN
Tackling the climate and ecological emergency together

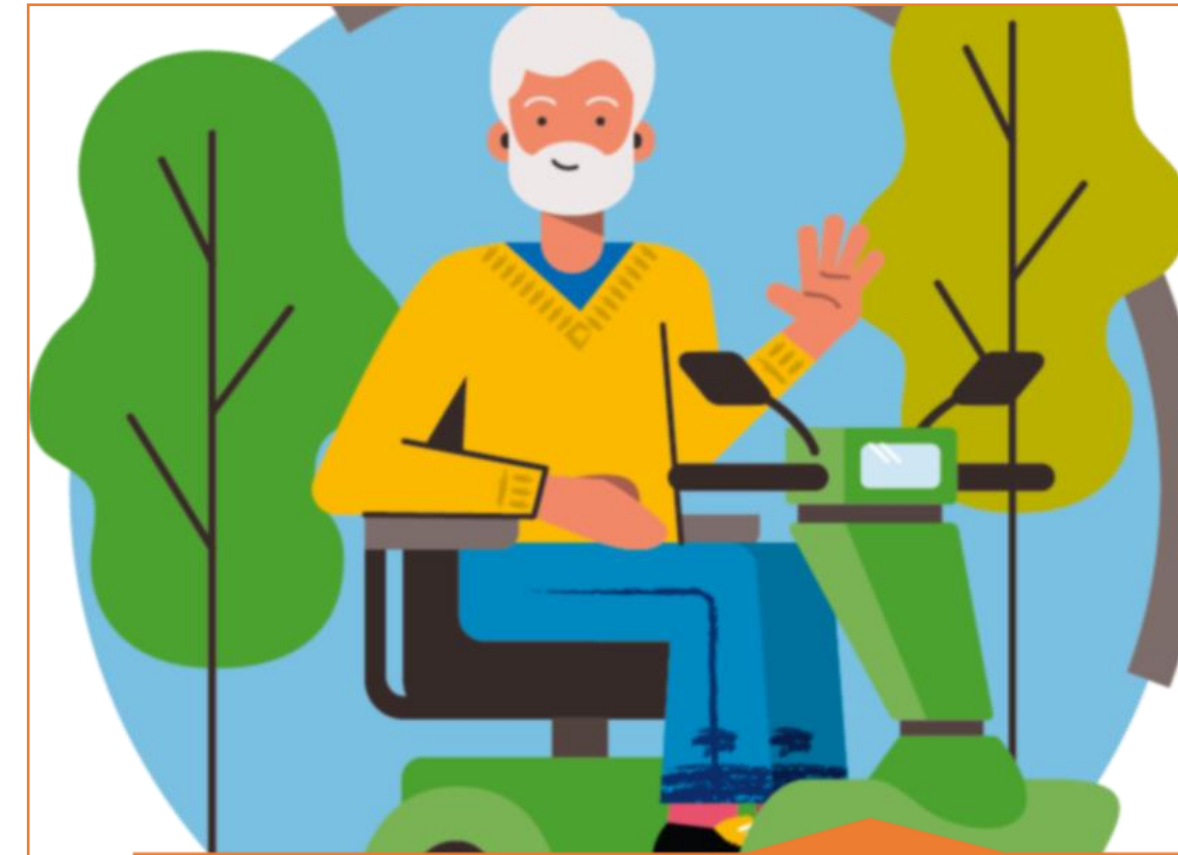
Kerbside Strategy Overview

Aims

- **25%** sustainable kerbside by 2030
- 4 priorities
- “Kerbside basics”

Context

- 60% Lambeth households don't own a car
- 94% Kerbside used to manage parking



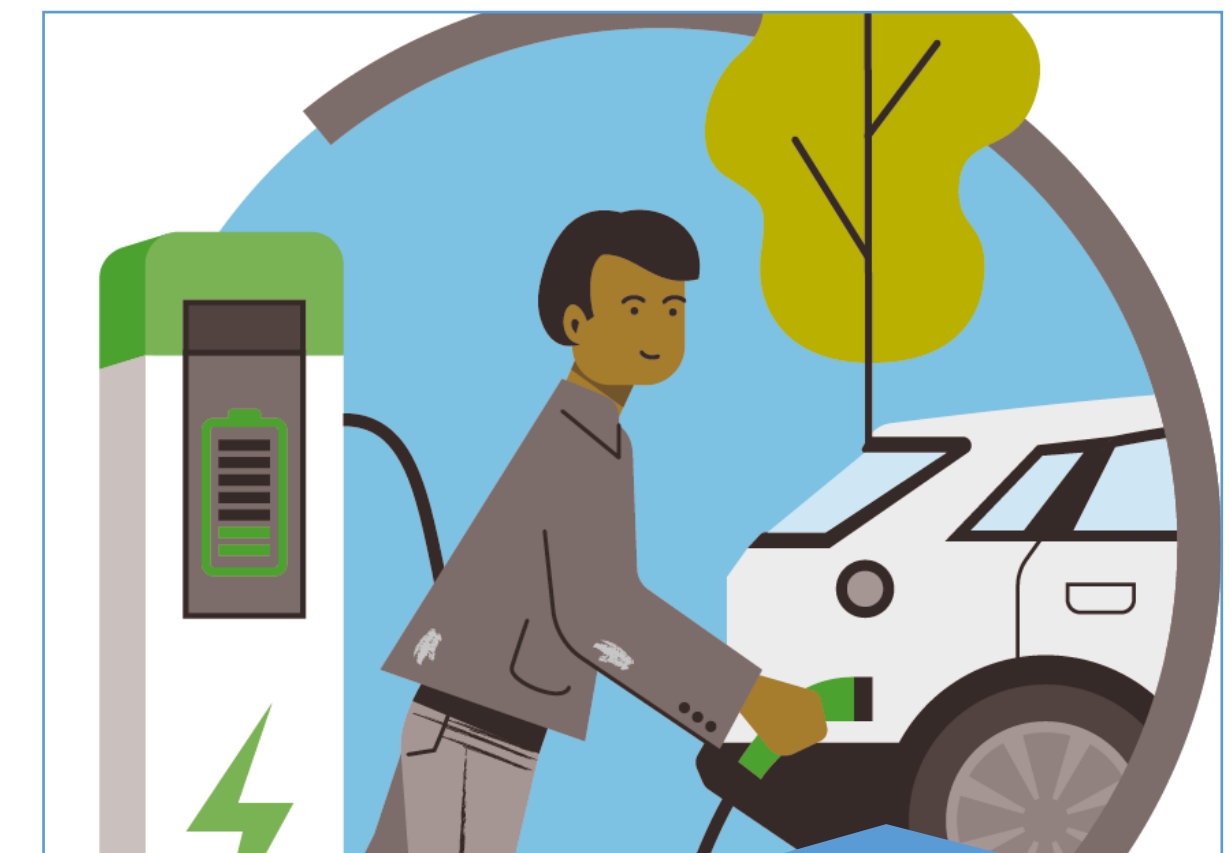
Enable Accessible
and Active Travel



Create Places for
People



Increase Climate
Resilience



Reduce Traffic and
Transport Emissions

Kerbside Strategy & cargo bikes

Kerbside Basic 1.2

- At a minimum, free cycle parking is available every 50 metres on every street in Lambeth.

Kerbside Basic 4.3

- Shared cargo bikes available on the kerbside within every neighbourhood across Lambeth, and no more than 5 minutes' walk of all households

Kerbside Basic 4.4

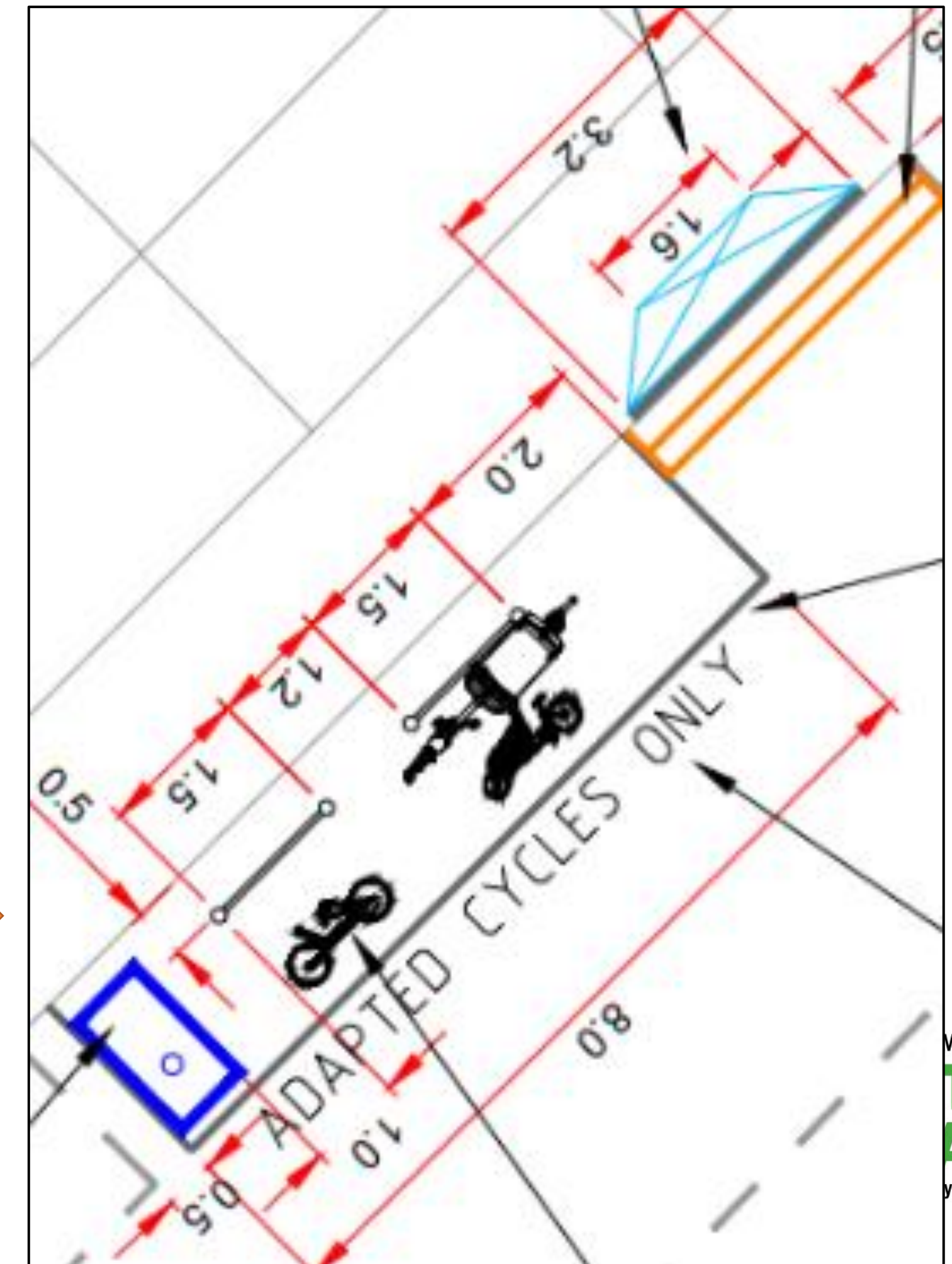
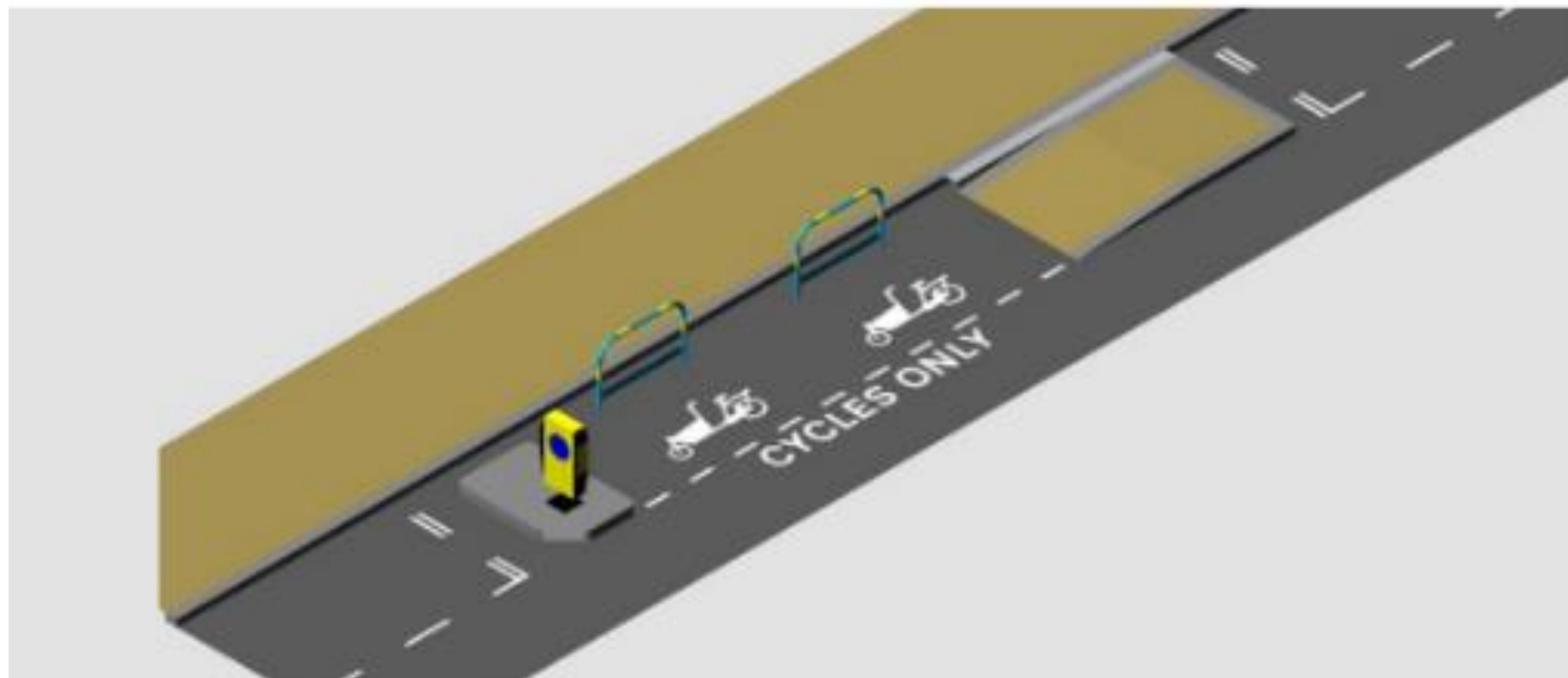
- All local high streets have a shared cargo bike hire service



Using the Kerbside for cargo bikes

- Kerbside Strategy Guidance
- Wheels for wellbeing inclusive design guidance
- ~5% adapted cycle parking
- Step free access
- Accessibility Working Group

Proposed adapted cycle parking design



Main barriers for e-cargo bikes

Lack of
exposure and
understanding?



Our Bike

- Community electric cargo bike share scheme for residents & businesses.
- Launched June 2022
- 75p per 15 minutes, 300 free minutes per month for new resident sign ups, 1200 free minutes per month for new business sign ups.
- 7 E-cargo bikes hosted by volunteer local small businesses



3523 hr

were booked across all the Lambeth OurBikes since the scheme was launched. This equals to 146 days of consecutive bookings.

1404

bookings were made since the launch of the scheme

5,099 km

were travelled by Lambeth OurBike users since the launch of the scheme.

62%

of Lambeth members use OurBike to replace cars while 6% of members use it to replace a van.

52%

of Lambeth OurBike users' report having never used a cargo-bike before signing up to OurBike.

41%

of Lambeth OurBike users' main barrier to using a car-go-bike is storage while 40% is affordability.

38%

of Lambeth OurBike users identify as female.

Thank you

Tash Hartke

Kerbside Strategy Programme
Manager

Elliot Quinn

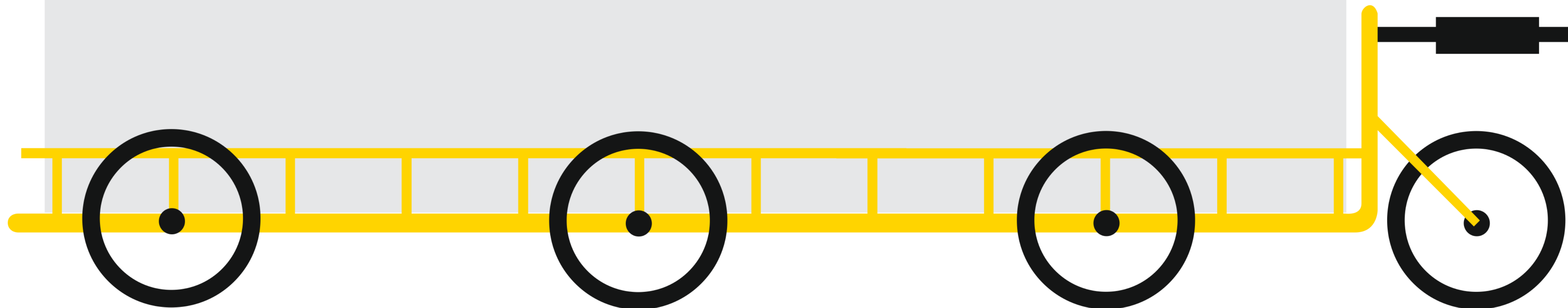
Climate Response Strategy Manager



Emily Harrup

Transport and Sustainability Joint Lead

Colchester City Council





Colchester eCargo bikes: community and champion-led

Emily Harrup Transport & Sustainability Joint Lead

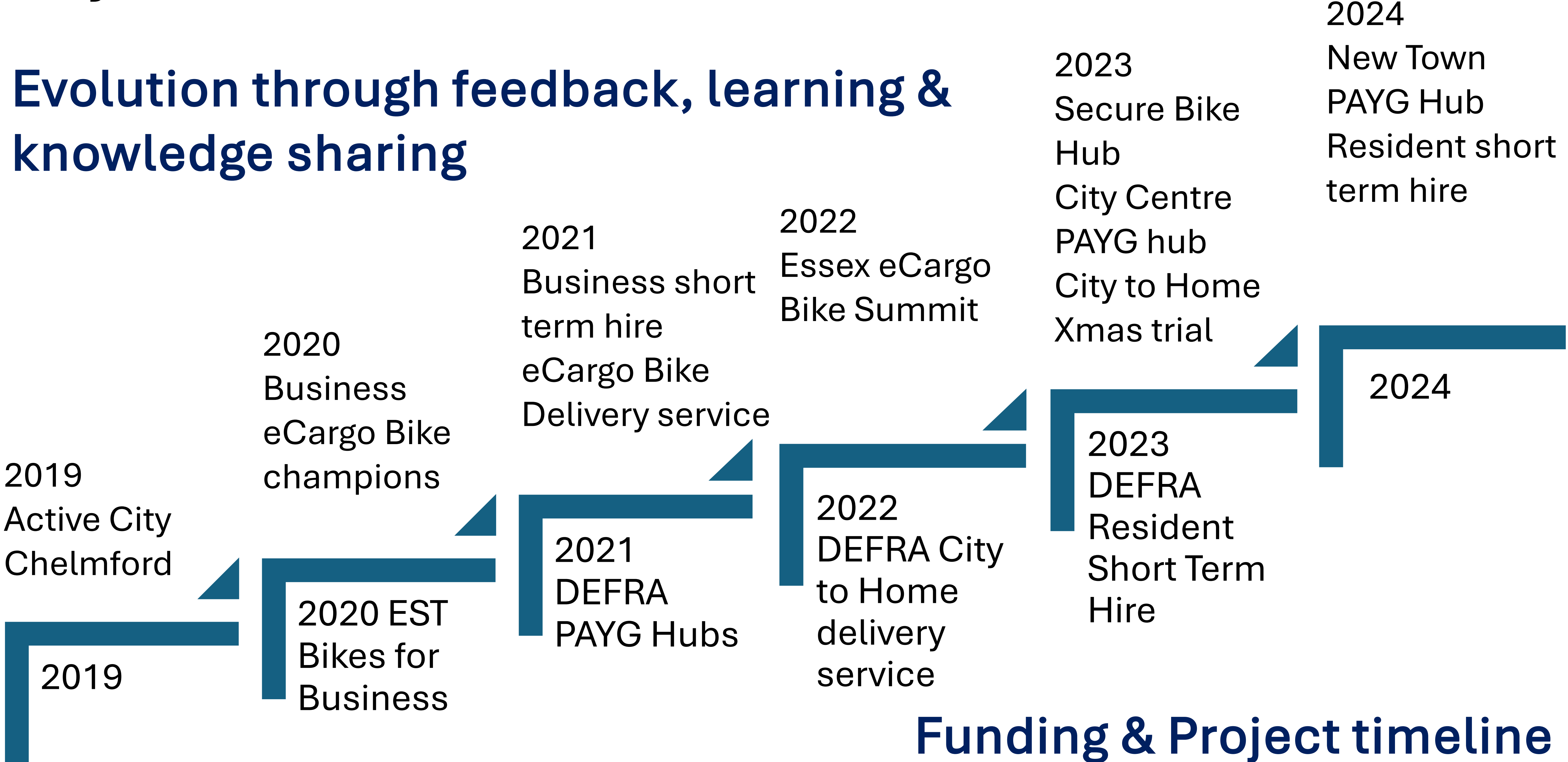


Our journey 2020 to 2024

- One man and his dog to 80+ eCargo bikes
- Asset Based Community Development approach
- Growth through:
 - Officer passion and determination
 - Champion enthusiasm and commitment
 - Evolving eCargo Bike eco system
 - Support from highways authority & volunteer groups

Key Milestones

Evolution through feedback, learning & knowledge sharing





Businesses

- 10 champions
- Range of uses
- Day to day operations
- Short term hire scheme
- Developing an eCargo Bike eco system
 - Colchester eCargo
 - Future Bikes
 - Colchester Bike Kitchen

Colchester eCargo

‘I want to set up a cargo bike delivery service!’

- From 1 eCargo bike to 16+
- 1 Chief Pilot to 12 employees
- Community/skills building
- Micro Mobility Support/City to Home, Micro-distribution hub
- Longtail hire to delivery riders
- Growth through knowledge share/transfer and experience





Future Bikes

‘How are we going to maintain our bikes?’

- Maintenance challenge
- Initially little local eBike/Cargo bike expertise
- Identified gap in the market
- Grown with us
- Shop opened 2022
- Mobile mechanic

City Centre Bike Hub

‘Wouldn’t it be great to offer key services in one place.’

- Secure Bike Parking
- eCargo Bike library PAYG hire
- Colchester Bike Kitchen
- Spokesafe
- Mutual promotion
- Share learning
- Roll out model elsewhere:
 - New Town Bike Kitchen
 - New Town Community Bike hub
 - Newport shared bike hub



New Town Community Bike Hub

**‘We want to set up a
shared bike hub!’**

- Try outs & Kim test developed
- Engagement on storage
- Spokesafe for access
- Contrast and compare with City Centre hub
- Share learning to help set up more community hubs





Try before you buy – Short term hire residents

‘We want short term hire too!’

- Try outs, conversations & survey
 - What bikes – Kim test applied
 - What price point
 - Accessories needed

Critical friends – test process

Already popular and we haven’t
launched yet!



Sharing Resources

‘We need to move bikes around but hiring vans is so expensive.’

- Maximise utilization
- Build community capacity & sustainability
- Easy to access service

Key Learning Points

- Our team embedded in the Community
- Grass roots and work upwards
- Track record internally & externally
 - Trusted to try new projects
 - Evolve and adapt
 - Collective expertise
- Work with the willing – they may not be businesses!
- Find your champions: support and *trust* them!





Remembering Pam Nelson, whose passion and enthusiasm was instrumental in starting us on our eCargo bike journey.
1954 - 2023

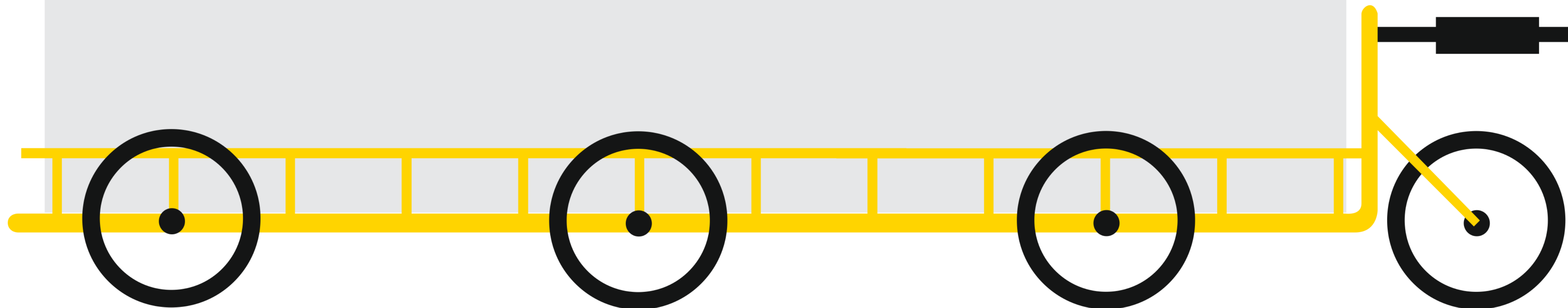
Thank you!

Emily.harrup@colchester.gov.uk
Colchester.gov.uk/ecargobikelibrary

Daniel Gosbee

Low Emission Transport Officer

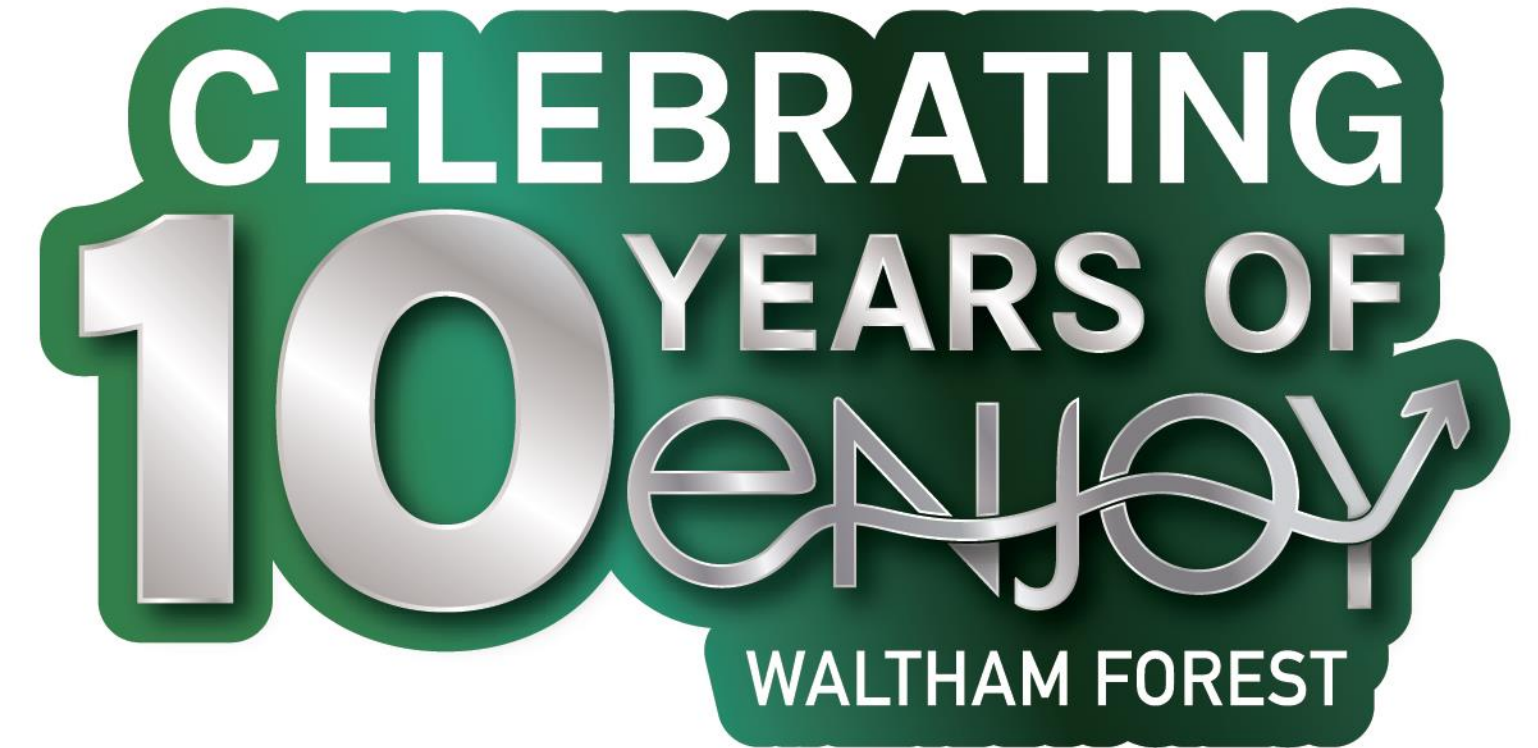
London Borough of Waltham Forest



The Cargo Bike journey in Waltham Forest

Daniel Gosbee

Low Emission Transport Officer



Cycling in Waltham Forest

Over 56 km of protected cycle lanes

Trained over 31,000 residents in cycle skills

22 School Streets

17 parklets

89 modal filters

Created

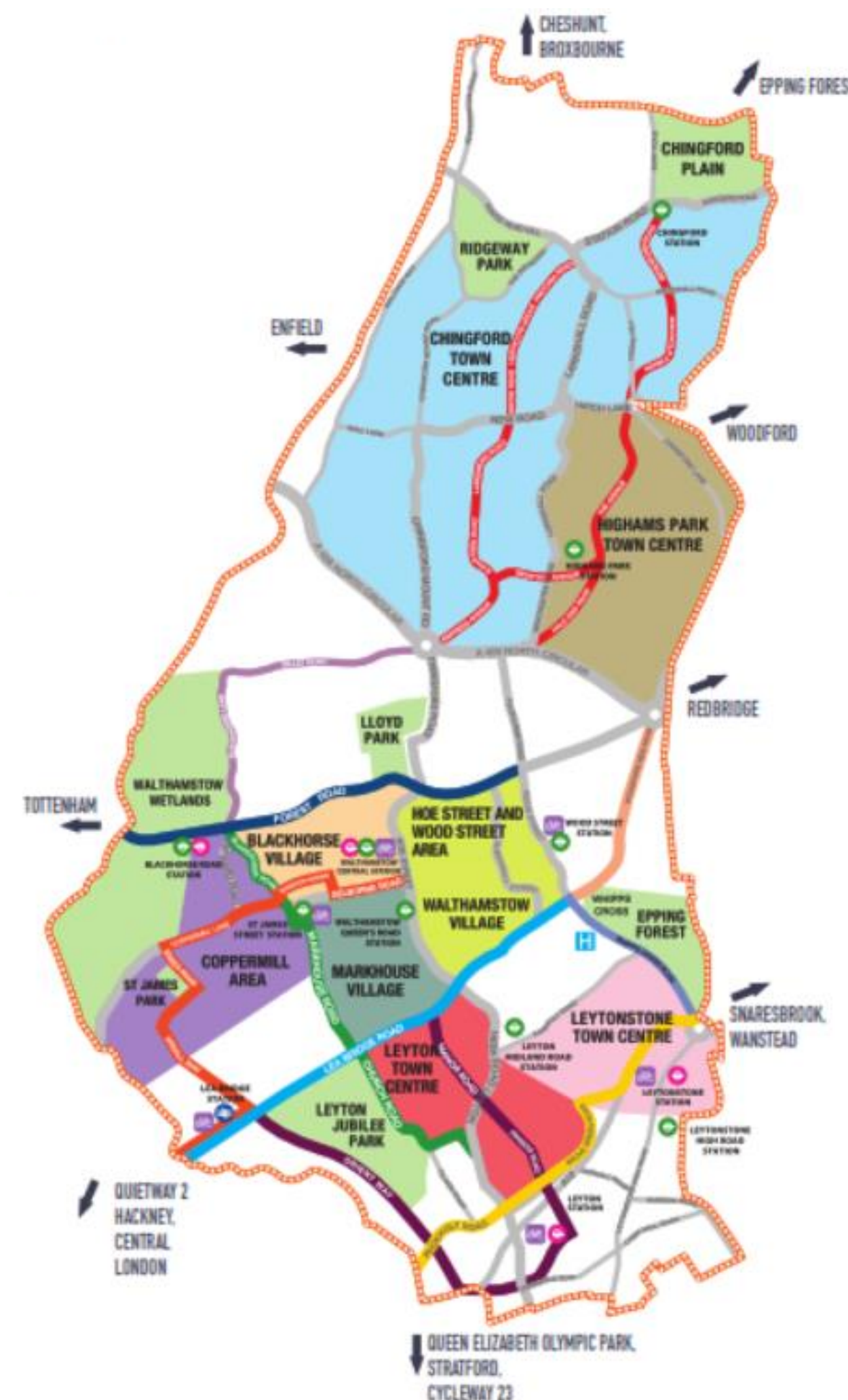
9 Waltham Forest Wanders walking routes

11 Station Cycle Hubs

765 Bikehangars

Achieved 69 TfL Travel for Life school travel plan accreditations

Over 70 public realm improvements



Cargo bikes in Waltham Forest

1). Community cargo bikes

- Fleet of 16 cargo bikes
- Used by residents, businesses and community organisations
- Available for short-term loans in exchange for a £100 refundable deposit
- A fleet of 30 step-throughs and step-over bikes also available

2). ZED Waltham Forest

- Fleet of 18 cargo bikes
- Used by local and national businesses for first and last mile deliveries
- In partnership with Zedify



Community Cycle Loan Scheme (January 2016)

Funding

- TfL's Borough Cycling Programme (2014-17)
- Carbon Offset Fund (utilises S106 developer contributions)

Costs to consider

- Insurance and maintenance
- Locks and accessories
- Parking solutions

Challenges

- Collections during office hours
- Demand – some bikes are fully booked until November 2024



Christmas Courier (December 2016)



2 weeks
6 cargo bikes
22 businesses
Over 1,000 deliveries made
2,636km cycled



ZED Waltham Forest (September 2017)

94 businesses

Over 435,000 deliveries made

Over 780,000km cycled

Over 275 tonnes CO_{2e} saved



Venner @venner_leyton · 07/03/2021 ...

We stock lots of lovely gifts & homewares all responsibly sourced from our wonderful independent suppliers. We offer click & collect every day, UK wide 1st class post & next working day zero emission delivery to E10, E11 & E17

venner-store.co.uk/shop-all/
[#WalthamForest](https://twitter.com/zedlbwf)



X - @zedlbwf

Instagram - @zedwalthamforest

Email –

hello@zedwalthamforest.co.uk

Try Before You Bike (February 2020)





TRIAL A NEW OR NEARLY NEW BIKE FOR A MONTHLY FEE
FROM £10 FOR KIDS BIKES / £20 FOR ADULT BIKES AND FOLDING
£50 FOR ELECTRIC / £100 FOR ADAPTED AND CARGO

Bike delivered directly to your door with a free induction session to increase your confidence.

If you like the bike, buy at a discounted price, take out an interest free monthly payment plan or purchase through the cycle to work scheme.

Range of bikes to try with a helpful guide to selecting the right one for you.

All bikes come with lights, lock and helmet and you can add any other accessories you might need.

Maintenance and theft cover available for peace of mind.

Free delivery and collection. No deposit, interest or cancellation fees.

Supported by



TRY BEFORE YOU BIKE



Working with your local council to make cycling accessible to anyone and everyone

VISIT [PEDDLEMYWHEELS.COM](https://peddlemywheels.com) FOR MORE INFO

Follow us on  Twitter @peddlemywheels

 Peddle My Wheels
@peddlemywheels

We have been so busy we haven't had time to welcome all our new councils.

So welcome Waltham Forest, one of our favourite borough's. We're really excited to be running [#trybeforeyoubike](#) here. Here's a resident Michael who is replacing his stolen car with a cargo bike! [@wfcouncil](#)



7:47 PM · Apr 11, 2020 from Lambeth, London · Twitter for Android

Engaging communities (March 2020)



Cargo Bike try out events (August 2021)

- How to respond to high demand?
- Summer 2021 – three cargo bike try out events
- Walking and Cycling Try Out Days – since Spring 2022
 - Dr Bike
 - Peddle My Wheels
 - Community groups – Leyton Orient Trust, JoyRiders, Carry Me
 - Smoothie bikes
 - Health and wellbeing walks



DfT eCargo Bike Grant (February 2022)

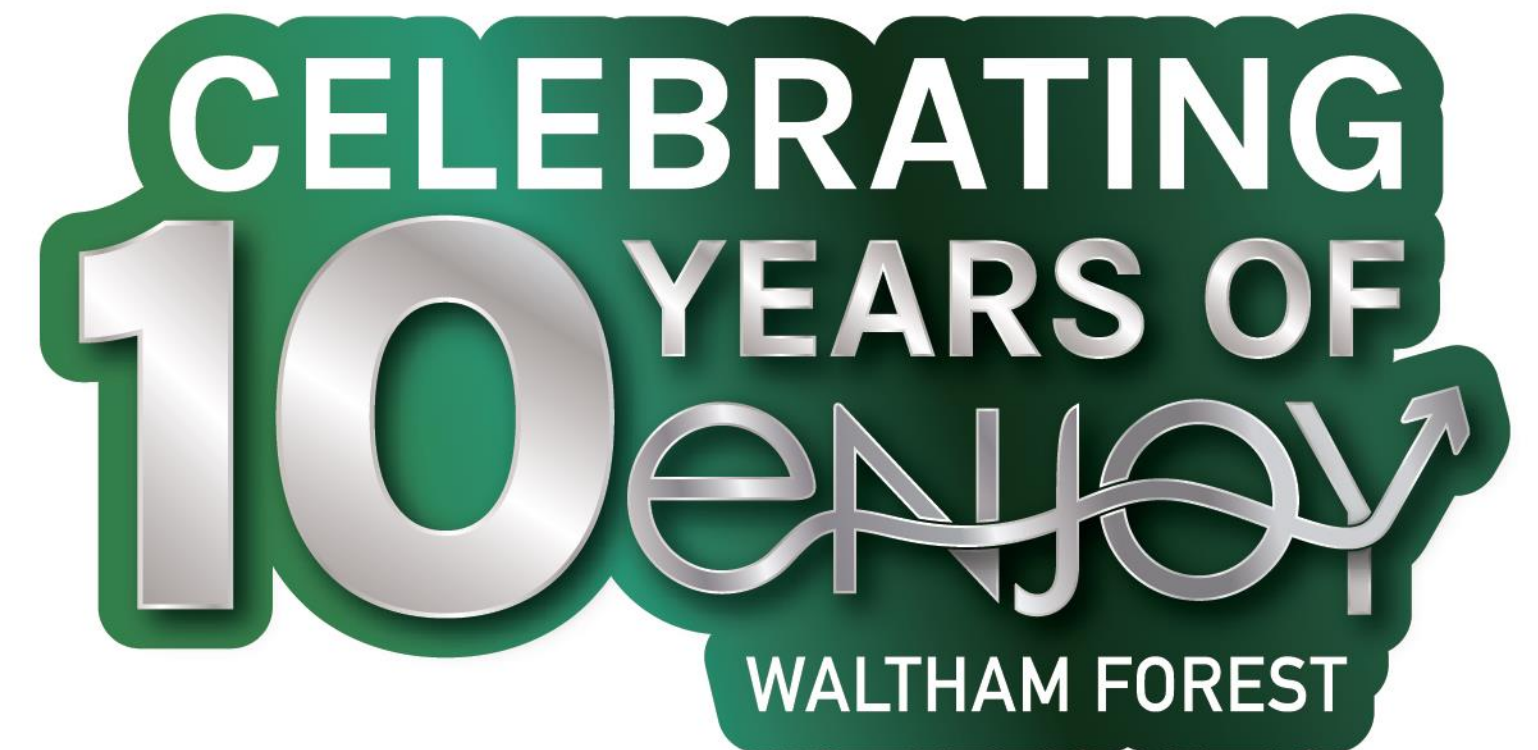
- Purchased 21 eCargo bikes and seven trailers
- To support local community project, businesses and Council services
- Community groups:
 - OrganicLea
 - The Hornbeam
 - Forest Recycling Project
 - HEET
 - Transition Leytonstone
- LBWF Waste and Recycling
- Business estate shared cargo bikes for business – Fairways Industrial Estate, Leyton
- LBWF Cargo bike for business trial



Thank you for listening

Daniel Gosbee

cycling@walthamforest.gov.uk



NATIONAL
CARGO BIKE
SUMMIT

Ali Howes, Senior Transport Planner, Zero Emissions Network (ZEN)

Alice Carter, Active Travel Officer, Transport for Greater Manchester

Richard Andrews, Active Travel Project Officer, Norfolk County Council

Tash Hartke, Kerbside Strategy Programme Manager, London Borough of Lambeth

Elliot Quinn, Climate Response Strategy Manager, London Borough of Lambeth

Emily Harrup, Transport and Sustainability Joint Lead, Colchester City Council

Daniel Gosbee, Low Emission Transport Officer, London Borough Waltham Forest



Headline sponsors:



NATIONAL CARGO BIKE SUMMIT

Supported by:



Lambeth



Royal Mail

